

2016

Kitchen and Bath Design Planner



**carolina**  
CABINET  
WAREHOUSE

## How To Measure your Kitchen or Bath for new cabinets

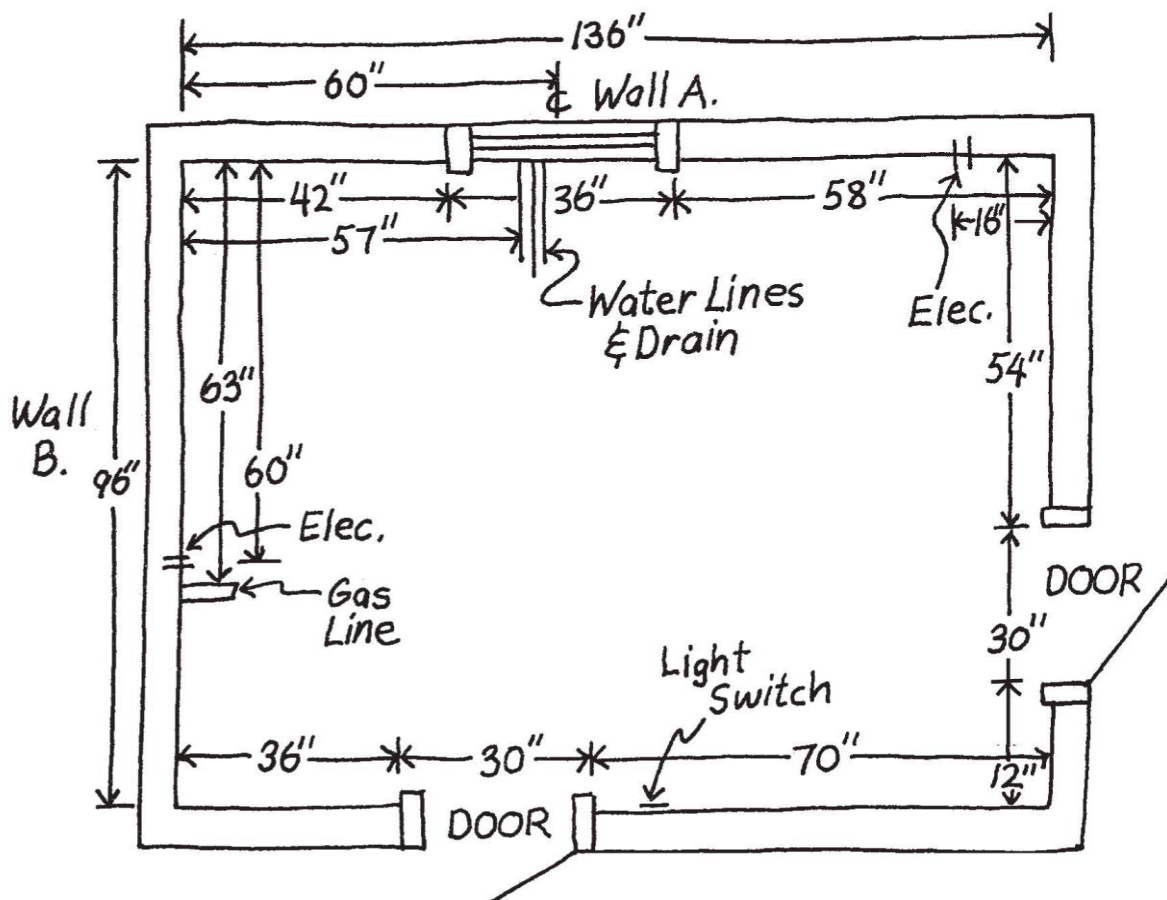
Accurate measurements of your kitchen or bath are important in designing your new cabinets. Please follow the steps listed in this kitchen and bath planner and give the information to your Carolina Cabinet Warehouse product specialist.

### Floor Plan

You will need to carefully configure the exact dimensions of your room. Your completed floor plan should resemble the diagram below. Be sure to show exact locations of doors, windows, hood vents, exhaust, gas lines, water line, drain line, outlets, switches, light fixtures, and heat vents.

**NOTE: ALWAYS DOUBLE CHECK MEASUREMENTS.**

\*Please note that dimensions shown in sketches are for reference only and are showing a typical scenario. Your kitchen may vary greatly from the following:



## How To Measure your Kitchen & Bath for new cabinets

Using a tape measure and graph paper, measure your room using the following steps.

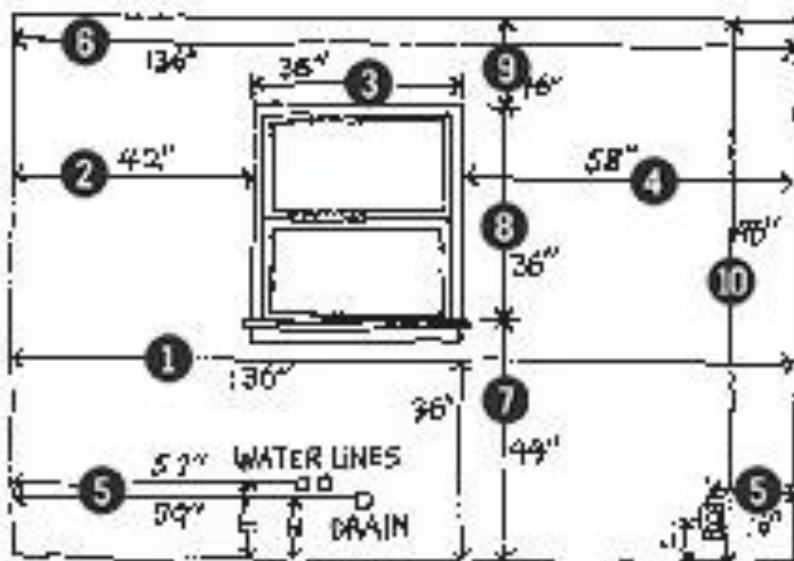
### Horizontal Measurement

1. Measure from wall to wall at 36" height. (#1)
2. Measure from corner to window or door opening. (#2)
3. Measure across opening from trim edge or molding edge. (#3)
4. Measure from edge of trim to far wall. (#4)
- Compare sum of (#2), (#3), and (#4) measurements to step (#1).
5. Mark exact location of water, drain, gas lines and electrical outlets and switches on drawing. (#5)
6. Measure from wall to wall above window (#6) and compare to (#1).

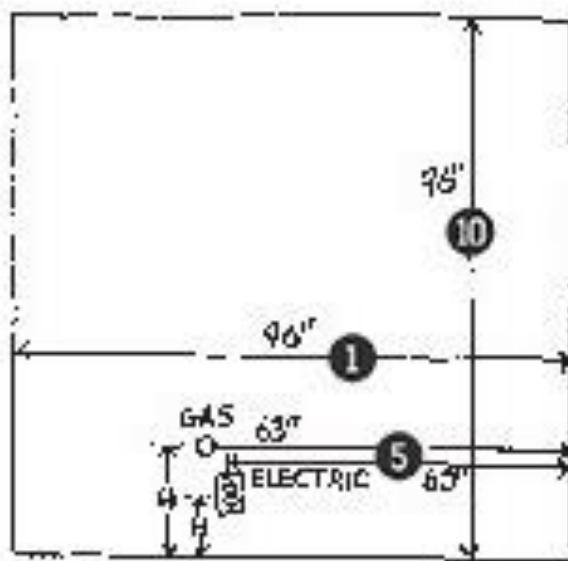
### Vertical Measurement

7. Measure from floor to window sill. (#7)
8. Measure from window sill to top of window. (#8)
9. Measure from top of window to ceiling. (#9)
10. Measure from floor to ceiling (#10) and compare to sum of (#7), (#8), and (#9).

**\*Please note that dimensions shown in sketches are for reference only and are showing a typical scenario. Your kitchen may vary greatly from the following:**



WALL A.

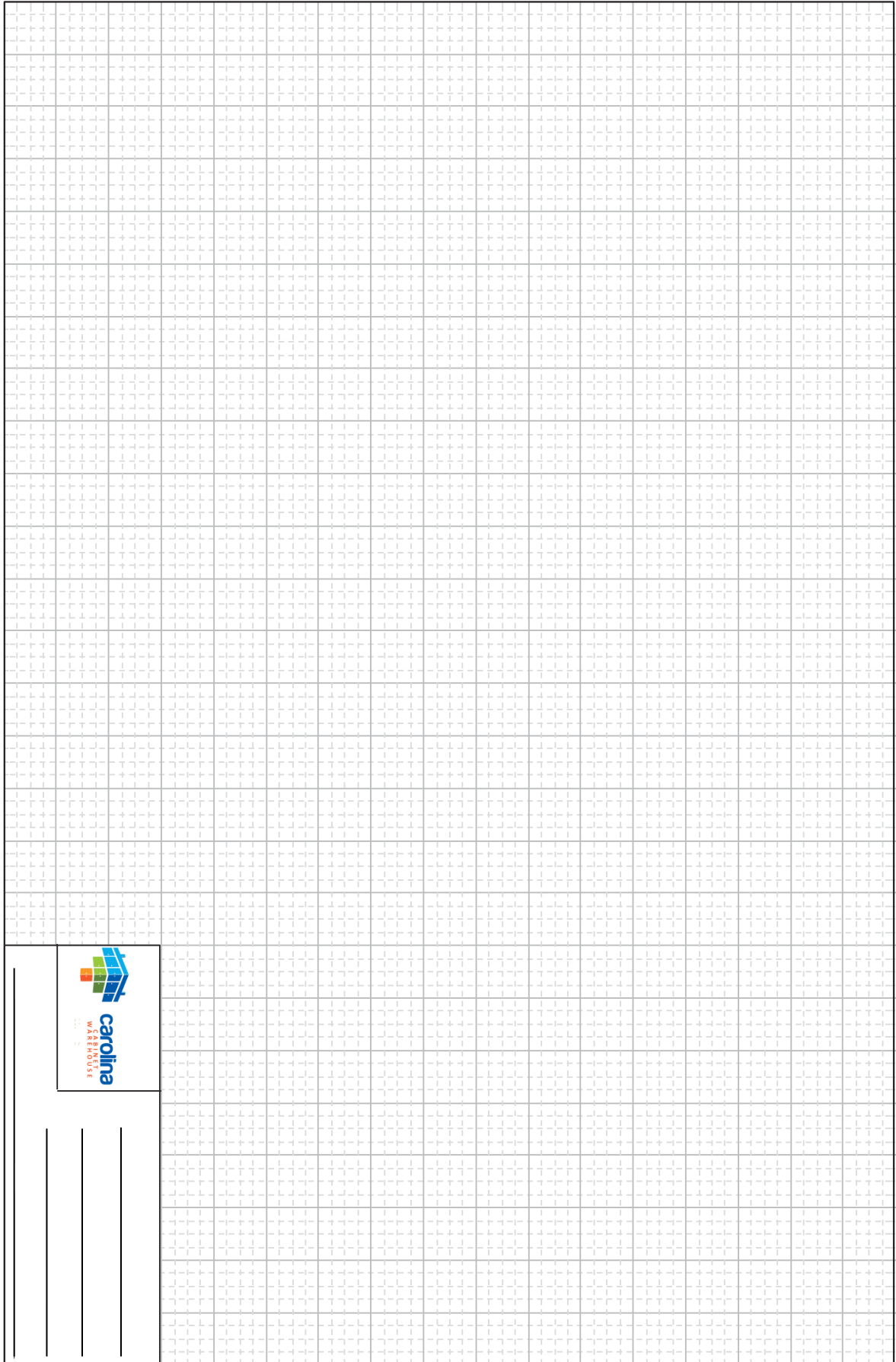


WALL B.



**carolina**  
CABINET  
WAREHOUSE

Each large square represent 1 square ft and the small squares represent 3"



Three vertical lines for notes or specifications:

---

---

---



**Appliance and Fixture information**

List desired or existing appliances on drawing. Be sure to indicate 220 volt outlets, wall mounted appliances and fixtures, telephone and cable locations. Also note gas line and appliance locations and model number.

|              | Type | Size W x D x H | Hinge Position L/R<br>(Facing Appliance) |
|--------------|------|----------------|--|
| Refrigerator |      |                |  |
| Range        |      |                |  |
| Cooktop      |      |                |  |
| Exhaust Hood |      |                |  |
| Wall Oven    |      |                |  |
| Microwave    |      |                |  |
| Dishwasher   |      |                |  |
| Sink         |      |                |  |
| Disposal     |      |                |  |
| Compactor    |      |                |  |
| Freezer      |      |                |  |
| Other        |      |                |  |

**List any special instructions or Notes:**

|  |
|--|
|  |
|  |
|  |
|  |
|  |
|  |
|  |
|  |
|  |
|  |